

FEED BOX, BRAKE AND PRESSURE BAR CLAMP

5/16" Machines

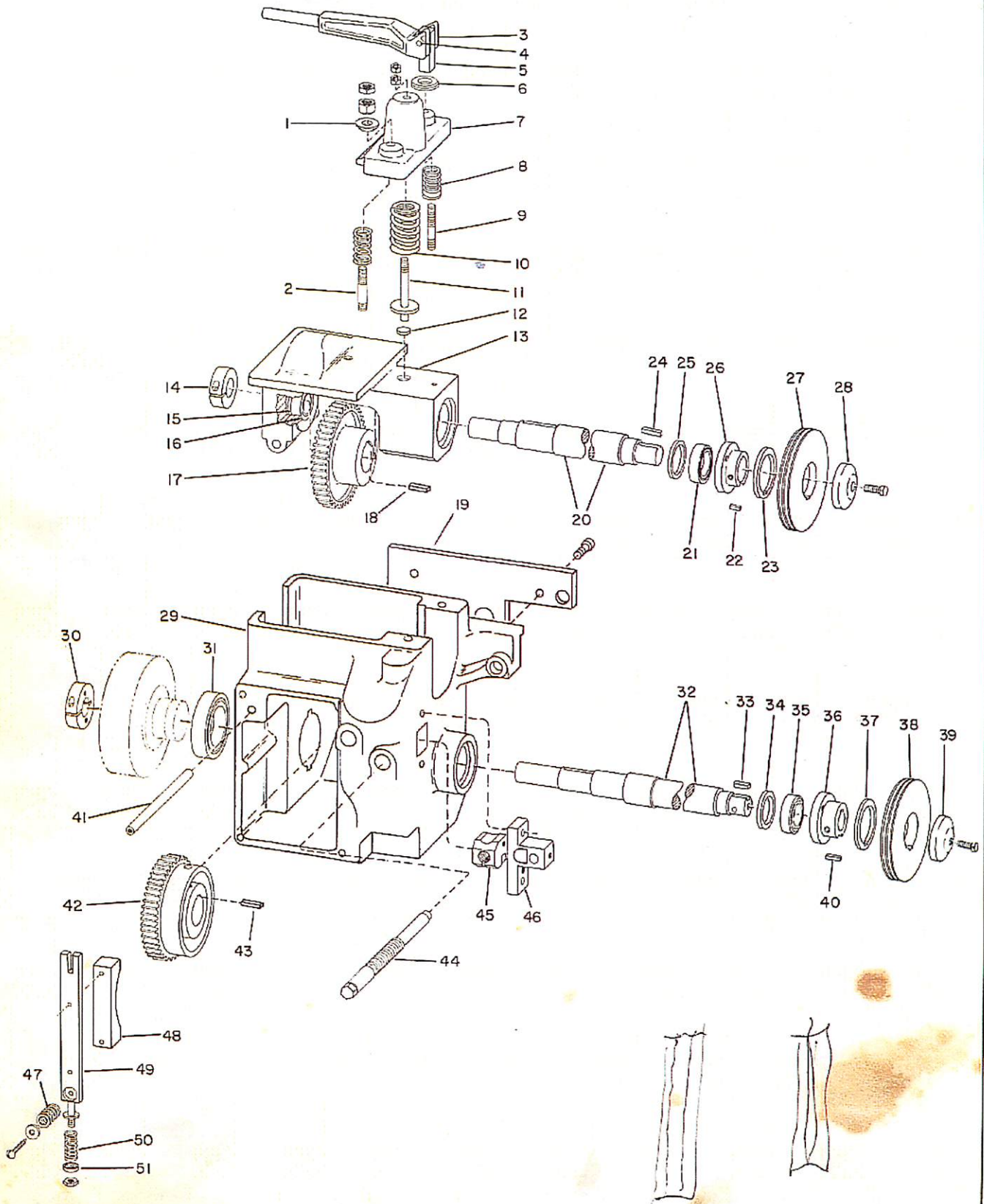


Figure 16

FEED BOX, BRAKE AND PRESSURE BAR CLAMP
(5/16" Machines)

KEY NO.	PART NAME	QTY.
16-1	Spherical Washer for Pressure Bar Stud	1
16-2	Pressure Bar Stud.	1
16-3	Pressure Bar Wrench	1
16-4	Pin in Pressure Bar Wrench	1
16-5	Nut on Pressure Bar Wrench	1
16-6	Washer for Pressure Bar Wrench	1
16-7	Feed Roll Pressure Bar	1
16-8	Pressure Bar Lifting Spring	2
16-9	Pressure Bar Stud.	1
16-10	Upper Feed Roll Pressure Spring	1
16-11	Stud for Feed Roll Pressure Bar	1
16-12	Disc under Pressure Bar Stud.	1
16-13	Upper Roll Shaft Housing	1
16-14	Collar for Upper Feed Roll Shaft	1
16-15	Washer Behind Bearing in Upper Roll Shaft Housing	1
16-16	Bearing in Upper Roll Shaft Housing	1
16-17	Upper Feed Gear.	1
16-18	Key for Upper Feed Gear	1
16-19	Filler Plate for Feed Box to Bed	1
16-20	Upper Feed Roll Shaft	1
16-21	Roller Bearing on Upper Feed Roll Shaft	1
16-22	Key for Feed Roll to Feed Roll Hub	1
16-23	Washer Back of Feed Roll	2
16-24	Key for Feed Roll Hub to Shaft.	1
16-25	Washer Behind Feed Roll Shaft Bearing	1
16-26	Feed Roll Hub	1
16-27	Feed Roll	1
16-28	Feed Roll Clamp Washer	1
16-29	Feed Box	1
16-30	Collar for Lower Feed Roll Shaft	1
16-31	Bearing for Lower Feed Roll Shaft and Feed Clutch	1
16-32	Lower Feed Roll Shaft	1
16-33	Key for Feed Roll Hub to Shaft.	1
16-34	Washer Behind Feed Roll Shaft Bearing	1
16-35	Roller Bearing on Lower Feed Roll Shaft.	1
16-36	Feed Roll Hub.	1
16-37	Washer Back of Feed Roll	1
16-38	Feed Roll	1
16-39	Feed Roll Clamp Washer	1
16-40	Key for Feed Roll to Feed Roll Hub	1
16-41	Hinge Pin for Upper Roller Shaft Housing	1
16-42	Lower Feed Gear	1
16-43	Key for Lower Feed Gear	1
16-44	Kickout Backing Screw	1
16-45	Kickout Backing Screw Nut	1
16-46	Front Feed Tube Bracket	1
16-47	Feed Roll Brake Wedging Spring	1
16-48	Brake Shoe Block	1
16-49	Feed Roll Brake Lever	1
16-50	Feed Roll Brake Spring	1
16-51	Washer for Brake Spring	2