

HEADING SLIDE AND PUNCH ROCKER ASSEMBLY

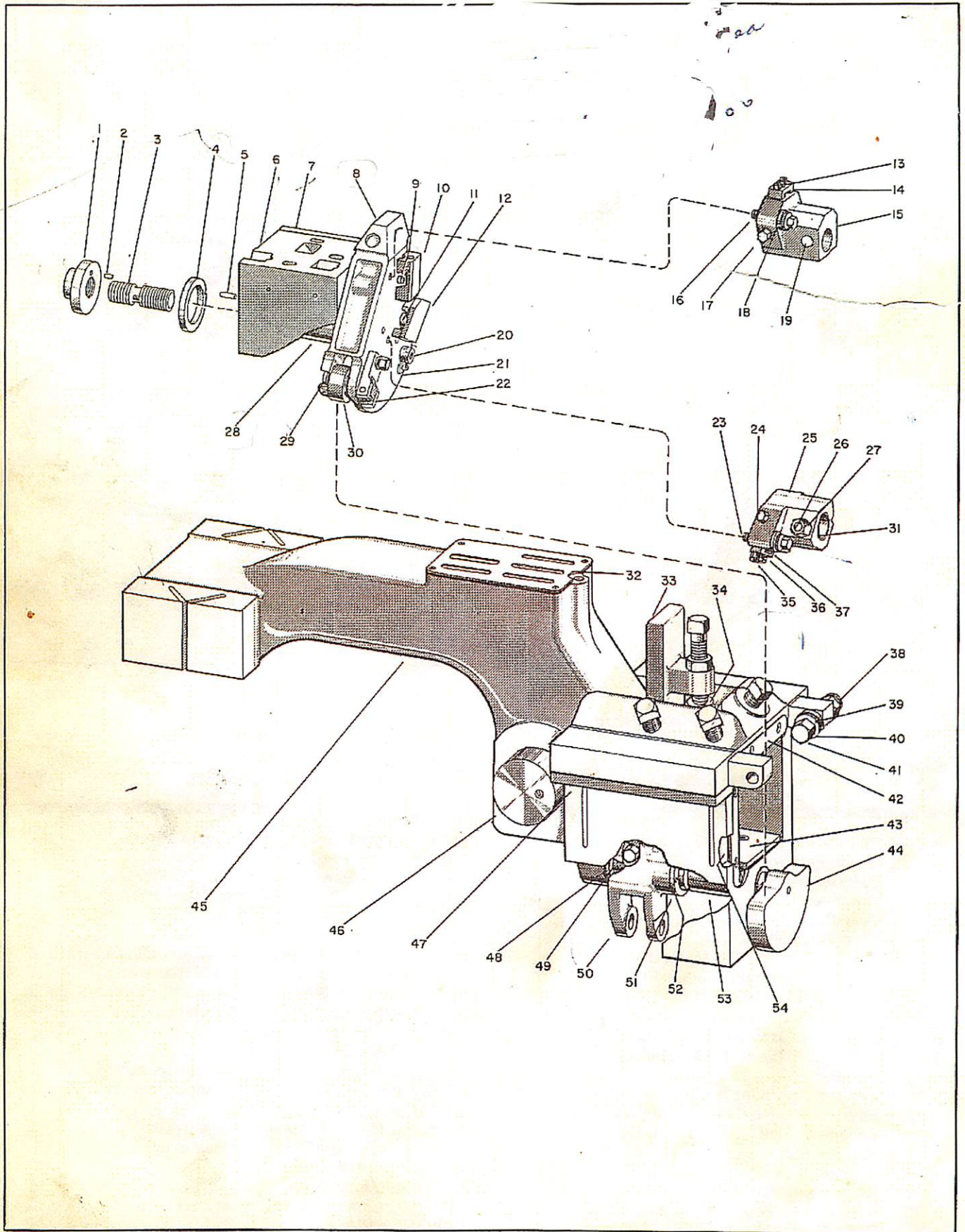


Figure 4



HEADING SLIDE AND PUNCH ROCKER ASSEMBLY

KEY NO.	PART NAME	QTY
4-1	Retainer for Punch Rocker . . . . .	1
4-2	Dowel for Retainer to Punch Rocker . . . . .	1
4-3	Stud for Retainer to Punch Rocker . . . . .	1
4-4	Retainer Bearing Washer . . . . .	1
4-5	Dowel for Bearing Washer to Block . . . . .	1
4-6	Punch Rocker Block . . . . .	1
4-7**	Side Check Plate on Punch Rocker Block . . . . .	1
4-8	Punch Rocker . . . . .	1
4-9	Guide Pin for Centering Block . . . . .	1
4-10	Centering Block for Finish Punch Holder . . . . .	1
4-11	Centering Block Pilot . . . . .	2
4-12	Centering Block for Cone Punch Holder . . . . .	1
4-13	Punch Holder Vertical Adjusting Screw . . . . .	1
4-14	Adjusting Screw Retainer . . . . .	1
4-15	Finish Punch Holder . . . . .	1
4-16	Screw for Punch Holder to Punch Rocker . . . . .	2
4-17	Punch Holder Horizontal Adjusting Screw . . . . .	2
4-18	Washer on Punch Holder Screw . . . . .	2
4-19	Punch Clamp Bolt . . . . .	2
4-20	Shifter Roller Pin in Rocker . . . . .	1
4-21	Pin Lock for Roller Pin in Rocker . . . . .	1
4-22	Wrench for Adjustable Roller in Rocker . . . . .	1
4-23	Screw for Punch Holder to Punch Rocker . . . . .	2
4-24	Punch Holder Horizontal Adjusting Screw . . . . .	2
4-25	Cone Punch Holder . . . . .	1
4-26	Sleeve for Clamp Bolt . . . . .	2
4-27	Punch Clamp Bolt Nut . . . . .	2
4-28	Punch Rocker Bushing . . . . .	1
4-29	Adjustable Shifter Roller Pin in Rocker . . . . .	1
4-30	Shifter Roller on Rocker . . . . .	2
4-31	Bush for Cone Punch . . . . .	1
4-32	Cover for Oil Pockets in Heading Slide . . . . .	1
4-33	Punch Rocker Wedge . . . . .	1
4-34	Hard Plate under Punch Rocker Wedge Adjusting Screw . . . . .	1
4-35	Punch Holder Vertical Adjusting Screw . . . . .	1
4-36	Adjusting Screw Retainer . . . . .	1
4-37	Washer on Punch Holder Screw . . . . .	2
4-38	Flexloc Nut on Abutment Screw . . . . .	2
4-39	Check Washer on Abutment Screw . . . . .	2
4-40	Belleville Washer on Abutment Screw . . . . .	2*
4-41	Abutment Screw for Punch Rocker . . . . .	2
4-42	Rocker Block Oil Shield . . . . .	1
4-43	Bearing Block Bottom Liner . . . . .	1
4-44	Punch Lock Camshaft . . . . .	1
4-45	Heading Slide . . . . .	1
4-46	Wrist Pin in Heading Slide . . . . .	1
4-47	Wearing Plate under Heading Slide . . . . .	2
4-48	Check Washer on Punch Lock Camshaft . . . . .	1
4-49	Rear Bearing on Punch Lock Camshaft . . . . .	1
4-50	Back Arm . . . . .	1
4-51	Thrust Washer on Punch Lock Camshaft . . . . .	1
4-52	Dowel for Thrust Washer to Back Arm . . . . .	2
4-53	Punch Lock Camshaft Bushing . . . . .	1
4-54	Neoprene Rocker Block Seal . . . . .	1

\* Quantity 4 on 1/4" Headers

\*\* Replacement side check plate must be ground to give the same dimension as the original punch rocker block and plate from the center of the punch rocker shaft to the right side of the punch rocker block and including the plate.