

# KNOCKOUT IN CONE AND FINISH PUNCH

For 5/16" Machines With Serial Number 32820 and Higher

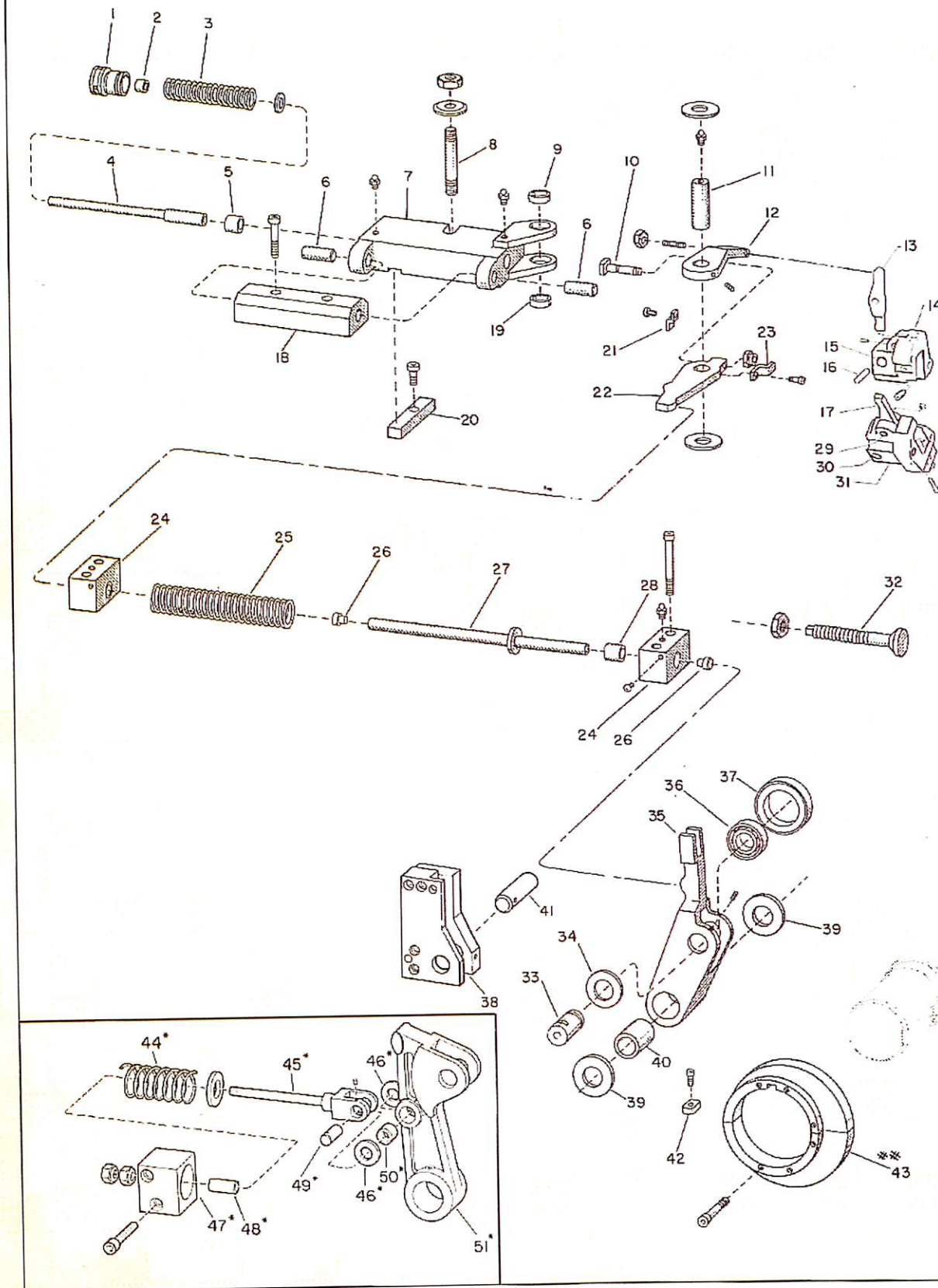


Figure 22

KNOCKOUT IN CONE AND FINISH PUNCH  
For 5/16" Machines with Serial Number 32820 and Higher

KEY NO.	PART NAME	QTY.
22-1	Front Spring Adjusting Screw . . . . .	1
22-2	Bush in Front Spring Adjusting Screw . . . . .	1
22-3	Front Spring . . . . .	1
22-4	Spring Rod . . . . .	1
22-5	Bush in Front of Knockout Lever Bracket . . . . .	1
22-6	Dowel in Front of Knockout Lever Bracket . . . . .	2
22-7	Front Knockout Lever Bracket . . . . .	1
22-8	Stud on Front Knockout Lever . . . . .	1
22-9	Bush in Front Knockout Lever . . . . .	1
22-10	Breaker Bolt in Front Knockout Lever . . . . .	1
22-11	Front Knockout Lever Fulcrum Pin . . . . .	1
22-12	Breaker Bolt Lever . . . . .	1
22-13	Kickout Lever - Finish Punch . . . . .	1
22-14	Finish Punch Holder . . . . .	1
22-15	Clamp Bolt Assembly - Finish Punch . . . . .	1
22-16	Pivot Pin for Lever . . . . .	1
22-17	Kickout Lever - Cone Punch . . . . .	1
22-18	Hinge Block for Bracket . . . . .	1
22-19	Bush in Front Knockout Lever . . . . .	1
22-20	Key for Bracket . . . . .	1
22-21	Breaker Bolt Retainer . . . . .	1
22-22	Front Knockout Lever . . . . .	1
22-23	Knockout Lever Breaker Bolt Retainer . . . . .	1
22-24	Push Rods Support . . . . .	2
22-25	Spring . . . . .	1
22-26	Ends for Knockout Push Rod . . . . .	2
22-27	Knockout Push Rod . . . . .	1
22-28	Bush in Push Rod Supports . . . . .	2
22-29	Pivot Pin for Lever . . . . .	1
22-30	Clamp Bolt Assembly - Cone Punch . . . . .	1
22-31	Cone Punch Holder . . . . .	1
22-32	Latchout Screw for Kickout Roller Lever . . . . .	1
22-33	Rear Knockout Lever Roller Pin . . . . .	1
22-34	Rear Knockout Lever Roller Pin Washer . . . . .	2
22-35	Rear Knockout Roller Lever . . . . .	1
22-36	Rear Knockout Lever Roller Bearing . . . . .	1
22-37	Rear Knockout . . . . .	1
22-38	Rear Knockout Lever Check Retainer . . . . .	1
22-39	Washer Rear Knockout Lever Fulcrum Pin . . . . .	2
22-40	Bush for Rear Knockout Lever . . . . .	1
22-41	Rear Knockout Lever Fulcrum Pin . . . . .	1
22-42	Bracket in Cam on Eccentric Shaft . . . . .	1
## 22-43	Cam on Eccentric Shaft . . . . .	1
*22-44	Latchout Rod Spring . . . . .	1
*22-45	Latchout Spring Rod . . . . .	1
*22-46	Latchout Rod Pin Washer . . . . .	2
*22-47	Latchout Rod Bracket . . . . .	1
*22-48	Latchout Rod Bracket Bushing . . . . .	1
*22-49	Latchout Rod Pin . . . . .	1
*22-50	Latchout Rod Pin Bearing . . . . .	1
*22-51	Roller Lever . . . . .	1

## Specify for long or short kick.  
\* On some machines.