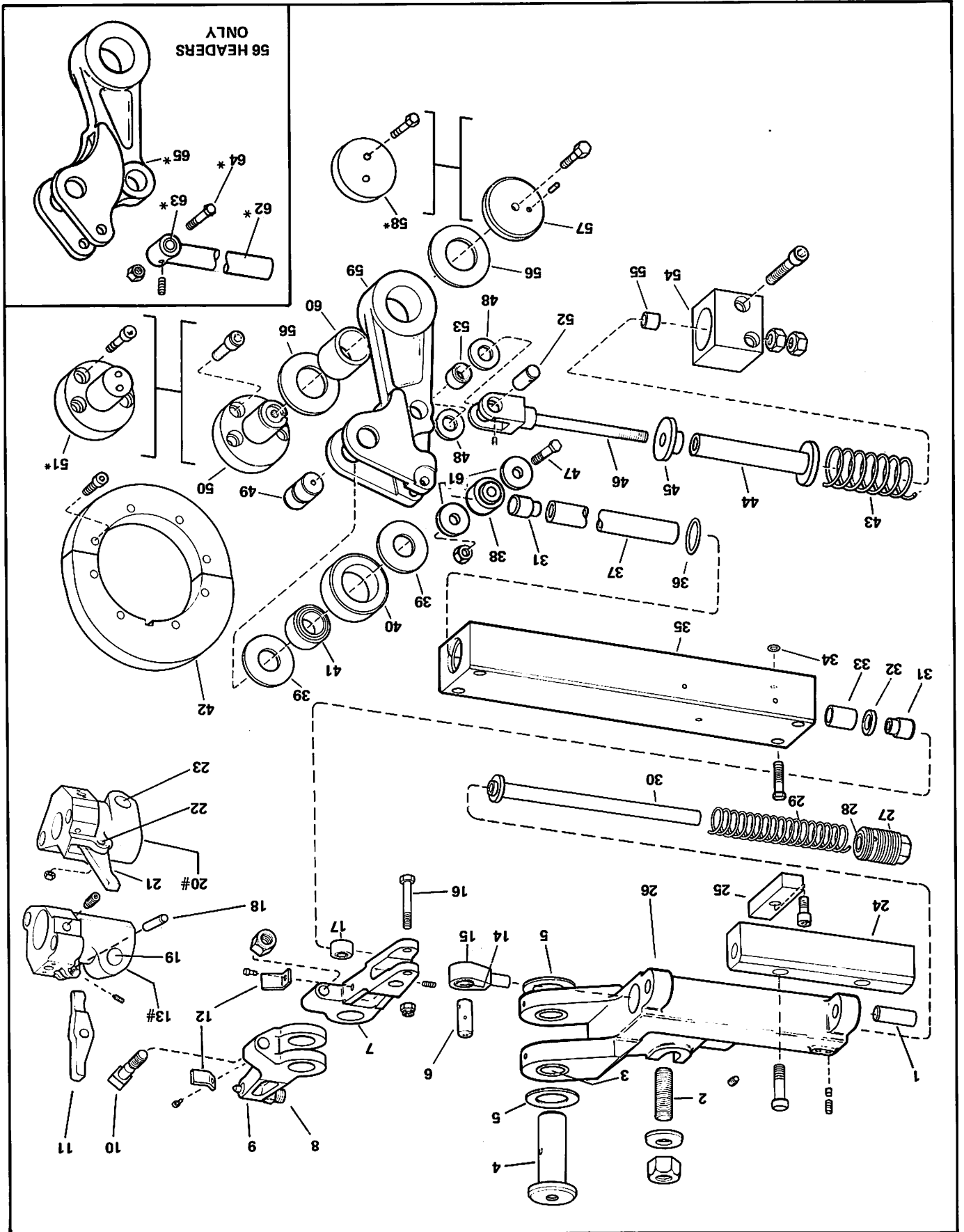


Figure KP



KNOCKOUT IN CONE AND FINISH PUNCH (OPTIONAL)

KNOCKOUT IN CONE AND FINISH PUNCH (OPTIONAL)

KEY NO.	PART NAME	QTY	KEY NO.	PART NAME	QTY
KP-1	Hinge Bracket Pivot Dowel	2	KP-34	"O" Ring Under Support	1
KP-2	Bracket Clamping Screw	1	KP-35	Pusher Rod Support	1
KP-3	Lever Pivot Pin Bracket Bushing . .	2	KP-36	"O" Ring in Support on Pusher Rod	1
KP-4	Front K.O. Lever Pivot Pin	1	KP-37	Pusher Rod	1
KP-5	Lever Pivot Pin Washer	2	KP-38	Pusher Rod Roller	1
KP-6	Spring Rod End Pin	1	KP-39	Roller Pin Washer	2
KP-7	K.O. Breaker Bolt Lever	1	KP-40	Cam Roller	1
KP-8	Adjusting Screw in K.O. Lever	1	KP-41	Cam Roller Bearing	1
KP-9	Front K.O. Lever	1	KP-42	Cam	1
KP-10	Front K.O. Lever Breaker Bolt	1		One Diameter Kick	1
KP-11	K.O. Lever - Finish Punch	1		Two Diameter Kick	1
KP-12	Breaker Bolt Retainer	2	KP-43	Latchout Rod Spring	1
KP-13#	Finish Punch Holder	1	KP-44	Latchout Spring Rod Sleeve	1
KP-14	Spring Rod End Bearing	1	KP-45	Latchout Spring Seat	1
KP-15	Spring Rod End	1	KP-46	Latchout Rod	1
KP-16	Roller Pivot Bolt	1	KP-47	Pusher Rod Roller Pivot Bolt	1
KP-17	Breaker Bolt Lever Roller	1	KP-48	Roller Pin Washer	2
KP-18	Pivot Pin for Lever	1	KP-49	Roller Pin	1
KP-19	Clamp Bolt Assembly - Finish Punch	1	KP-50	Roller Lever Fulcrum Pin	1
KP-20#	Cone Punch Holder	1	KP-51*	Roller Lever Fulcrum Pin	1
KP-21	K.O. Lever - Cone Punch	1	KP-52	Latchout Rod Pin	1
KP-22	Pivot Pin for Lever	1	KP-53	Latchout Rod Bearing	1
KP-23	Clamp Bolt Assembly - Cone Punch	1	KP-54	Latchout Rod Mounting Bracket . . .	1
KP-24	Hinge Block for Mounting Bracket . .	1	KP-55	Bushing in Bracket for Latchout Rod	1
KP-25	Key for Bracket	1	KP-56	Fulcrum Pin Washer	2
KP-26	K.O. Lever Mounting Bracket	1	KP-57	Lever Retainer	1
KP-27	Front Spring Adjusting Screw	1	KP-58*	Lever Retainer	1
KP-28	Bushing in Front Spring Adjusting Screw	1	KP-59	Roller Lever	1
KP-29	Spring on Front Spring Rod	1	KP-60	Roller Lever Bushing	1
KP-30	Front Spring Rod	1	KP-61	Washers	2
KP-31	Pusher Rod End	2	KP-62*	Pusher Rod	1
KP-32	Support Seal	1	KP-63*	Bushing in Pusher Rod	1
KP-33	Rod Bushing	1	KP-64*	Pusher Rod Roller Pivot Bolt	1
			KP-65*	Roller Lever	1

*56 Header only
#Specify bore size